

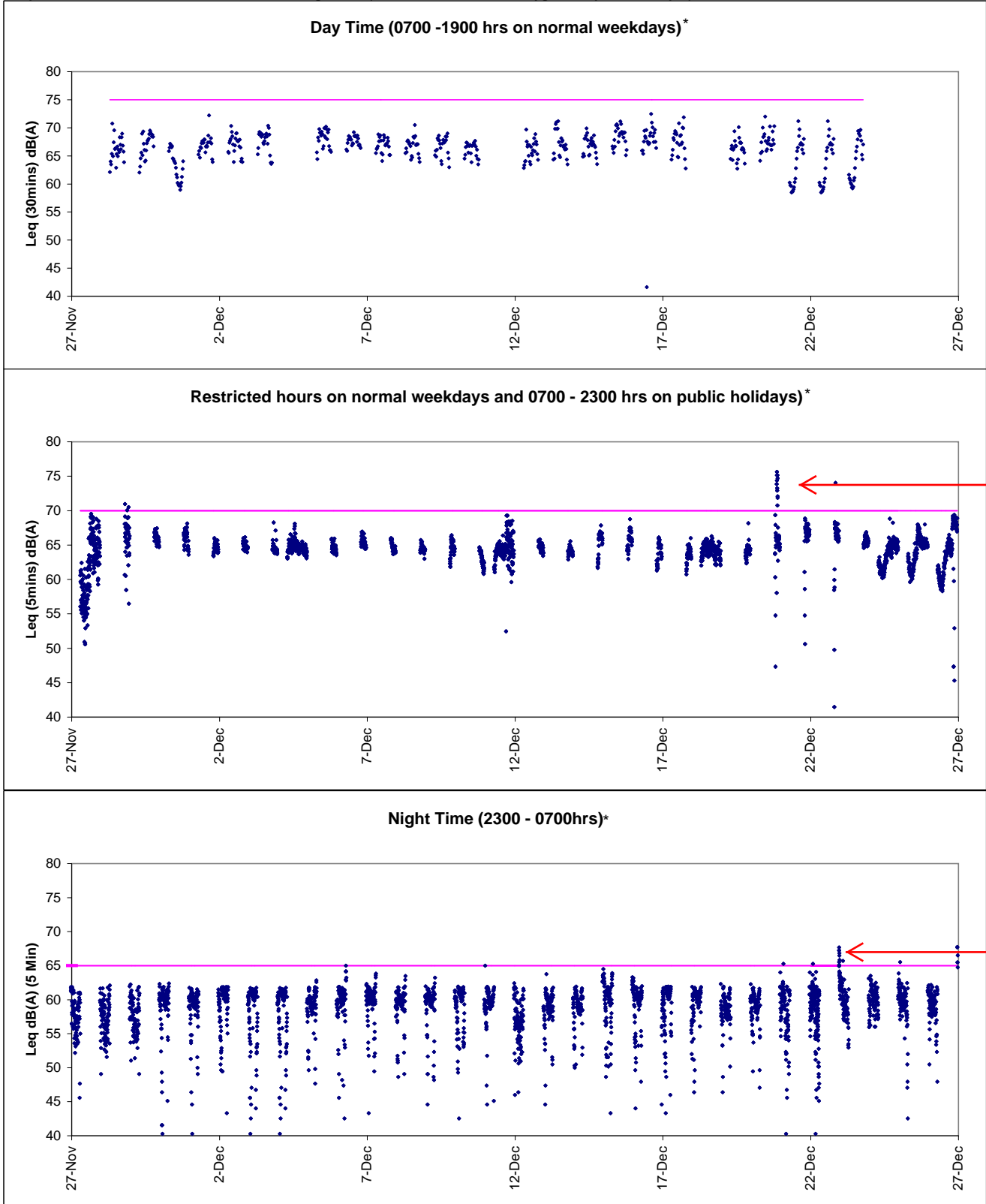
Real-time Noise Data RTN1 / FEHD Hong Kong Transport Section Whitefield Depot

Table with 6 columns of noise data entries, each containing a date and time in YYYY-MM-DD HH:MM:SS format.

Real-time Noise Data RTN1 (FEHD Hong Kong Transport Section Whitefield Depot)

27/12/2010 04:40 60.0
27/12/2010 04:45 59.5
27/12/2010 04:50 57.9
27/12/2010 04:55 59.4
27/12/2010 05:00 58.5
27/12/2010 05:05 57.7
27/12/2010 05:10 57.9
27/12/2010 05:15 58.5
27/12/2010 05:20 58.5
27/12/2010 05:25 56.6
27/12/2010 05:30 60.7
27/12/2010 05:35 58.2
27/12/2010 05:40 58.1
27/12/2010 05:45 59.7
27/12/2010 05:50 58.6
27/12/2010 05:55 53.4
27/12/2010 06:00 54.6
27/12/2010 06:05 53.9
27/12/2010 06:10 54.8
27/12/2010 06:15 57.0
27/12/2010 06:20 54.9
27/12/2010 06:25 52.3
27/12/2010 06:30 61.9
27/12/2010 06:35 61.3
27/12/2010 06:40 61.3
27/12/2010 06:45 47.9
27/12/2010 06:50 61.6
27/12/2010 06:55 60.8
27/12/2010 23:00 67.7
27/12/2010 23:05 67.7
27/12/2010 23:10 65.5
27/12/2010 23:15 65.5
27/12/2010 23:20 66.5
27/12/2010 23:25 64.8

Graphic Presentation of Real Time Noise Monitoring Result (Food and Environmental Hygiene Department Depot)



* The noise levels shown were already corrected with baseline noise

No construction activity was conducted during Restricted and Night Time period. As there is no construction work near the monitoring station, estimating the noise contributed from Island Eastern Corridor. It is concluded that the exceedances were non-project related.

Real-time Noise Data RTN2 (Oil Street Community Liaison Centre)

Table with 7 columns containing date-time noise data entries ranging from 01/12/2010 to 06/12/2010.

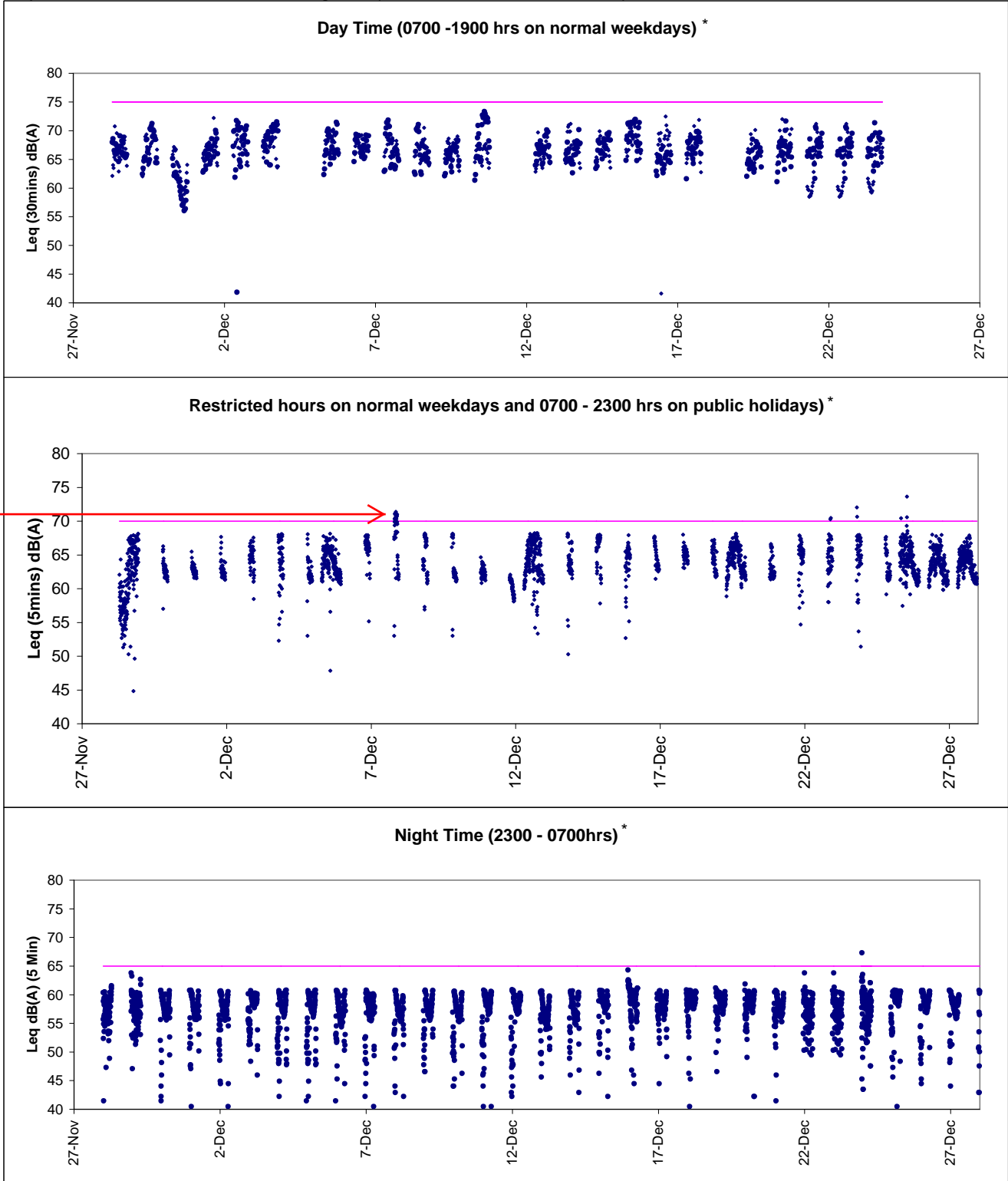
Real-time Noise Data RTN2 (Oil Street Community Liaison Centre)

27/12/2010 04:31 56.7
27/12/2010 04:36 55.8
27/12/2010 04:41 56.4
27/12/2010 04:46 56.8
27/12/2010 04:51 56.4
27/12/2010 04:56 55.9
27/12/2010 05:01 57.0
27/12/2010 05:06 55.9
27/12/2010 05:11 56.4
27/12/2010 05:16 56.5
27/12/2010 05:21 56.7
27/12/2010 05:26 57.0
27/12/2010 05:31 56.8
27/12/2010 05:36 56.9
27/12/2010 05:41 58.1
27/12/2010 05:46 59.4
27/12/2010 05:51 58.1
27/12/2010 05:56 58.7
27/12/2010 06:01 58.5
27/12/2010 06:06 58.9
27/12/2010 06:11 58.3
27/12/2010 06:16 58.5
27/12/2010 06:21 58.7
27/12/2010 06:26 59.4
27/12/2010 06:31 59.4
27/12/2010 06:36 59.1
27/12/2010 06:41 58.9
27/12/2010 06:46 59.9
27/12/2010 06:51 60.0
27/12/2010 06:56 59.7
27/12/2010 23:01 50.6
27/12/2010 23:06 42.9
27/12/2010 23:11 50.9
27/12/2010 23:16 53.5
27/12/2010 23:21 56.9
27/12/2010 23:26 60.8
27/12/2010 23:31 42.9
27/12/2010 23:36 47.5
27/12/2010 23:41 60.3
27/12/2010 23:46 56.5
27/12/2010 23:51 50.0
27/12/2010 23:56 60.6

Remarks:

Exceedances were bolded.

Graphic Presentation of Real Time Noise Monitoring Result (Oil Street Communicate Liaison Centre)



According to contractor information, only maintenance work was conducted during the period of exceedance. Therefore, it is concluded that the exceedance was non-project related.

*The noise levels shown were already corrected with baseline noise